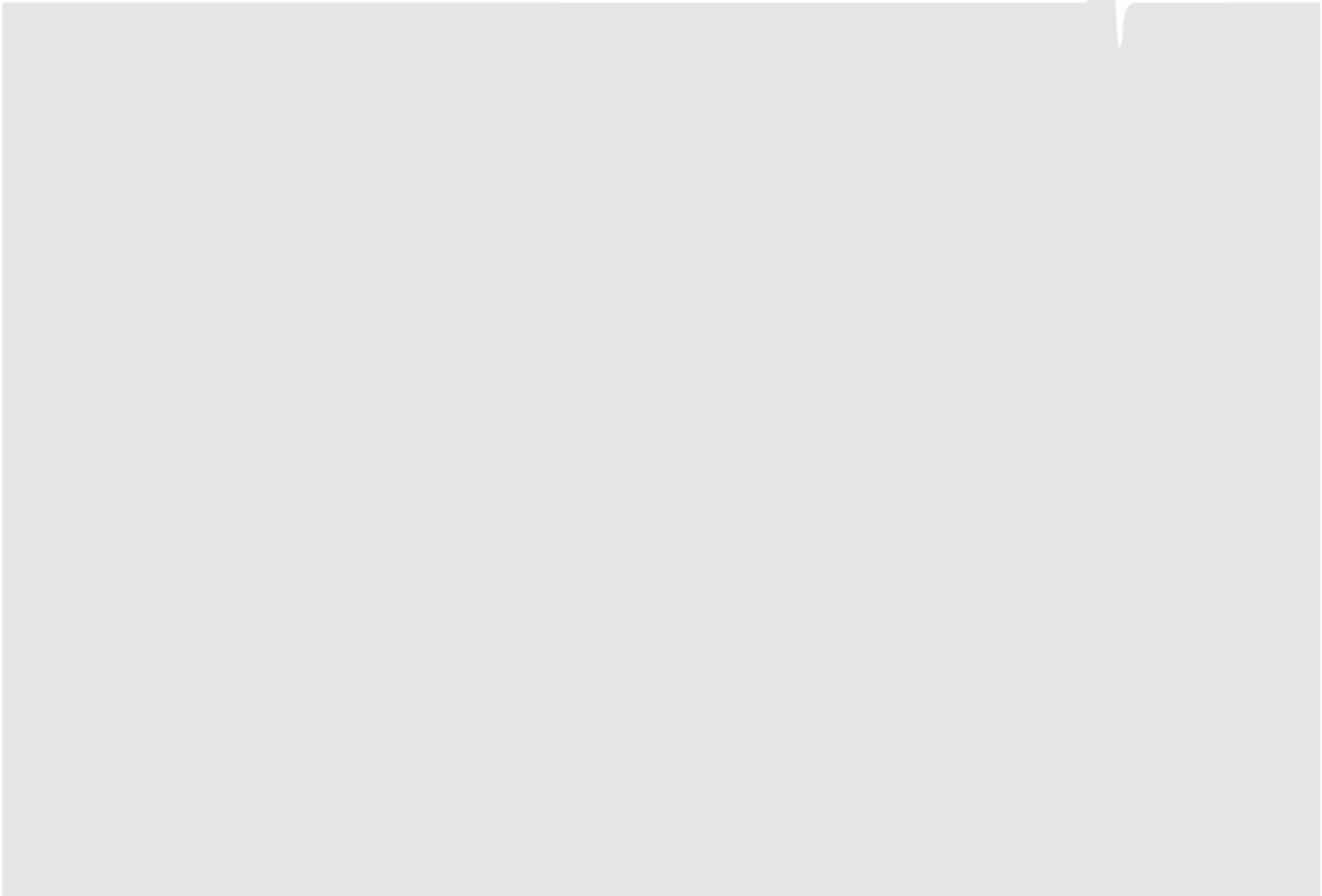




**Polar IrDA USB 1.1 Adapter and
Bridge Driver**
User manual



Contents

1. GENERAL	3
2. DRIVER INSTALLATION	3
Driver Installation With Windows Vista Operating System.....	6
3. HARDWARE INSTALLATION	9
Hardware Installation With Windows Vista	9
4. DETECTION	9
Detection With Windows Vista	10
5. ESTABLISHING IRDA CONNECTION WITH ANOTHER INFRARED DEVICE	11
6. REMOVE POLAR IRDA 1.1 USB ADAPTER FROM THE COMPUTER	12
7. UNINSTALLATION	12
Uninstallation With Windows Vista.....	14
8. TROUBLESHOOTING.....	16
9. TECHNICAL SPECIFICATIONS	16
10.LIMITED POLAR INTERNATIONAL GUARANTEE	16
11.POLAR DISCLAIMER	17
.....	17

1. GENERAL

Polar IrDA Adapter is designed for infrared data transfer between Polar heart rate monitors and other infrared products. No other use is intended or implied.


To use the Polar IrDA 1.1 Adapter and IrDA 1.1 Bridge Driver you need Windows® 98, Windows® ME, Windows® 2000, Windows® XP or Windows Vista® Operations System on your computer. Make sure you have also updated to the latest Service Pack of Microsoft Windows®.

2. DRIVER INSTALLATION

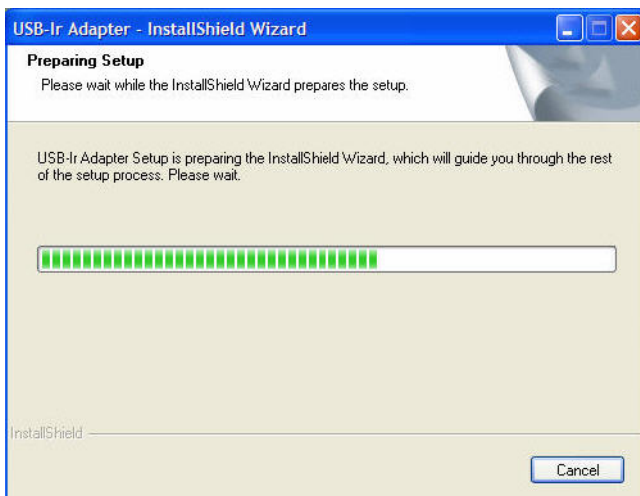
We recommend you insert the CD ROM in your PC and start by installing the USB 1.1 IrDA Bridge Driver.

The Driver installation will start automatically when you select OK.

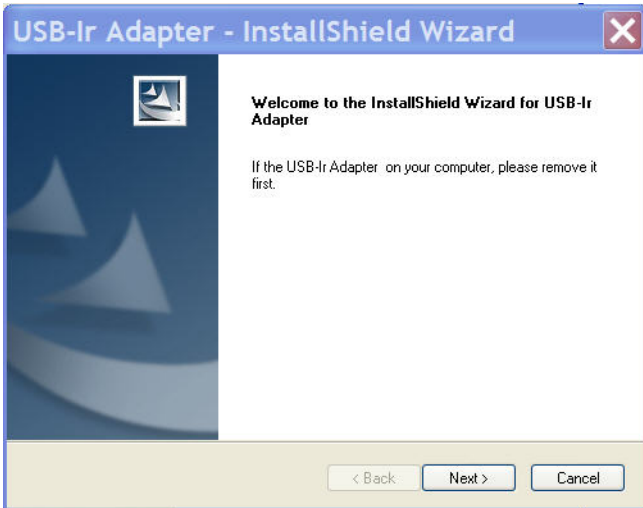
However, if it does not, open the CD Driver IR778 and select **Autorun**. On Windows Operation System, select folder **WinDriver** and **setup.exe** file.

 *The instructions from here on only work under Windows Operation System.*

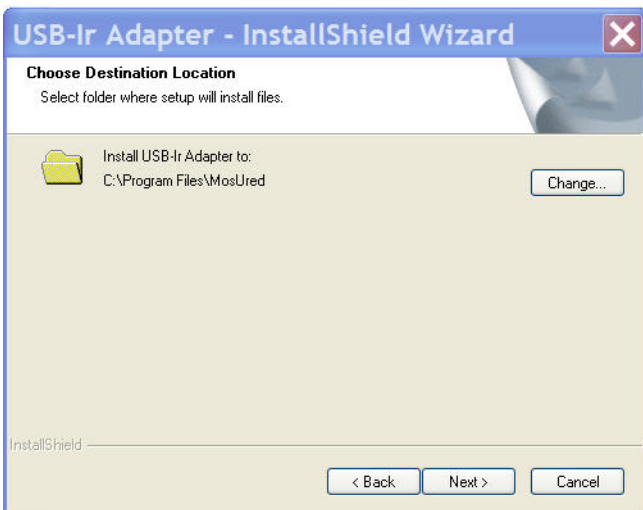
In automatic installation the following popup screen appears briefly indicating the installation has started:



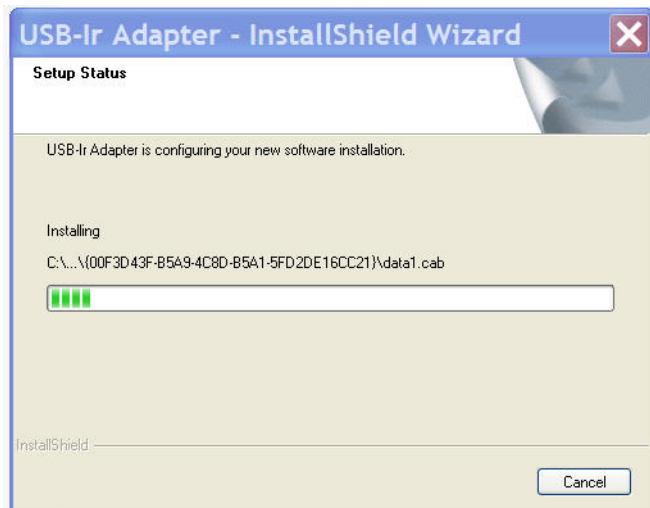
Click **Next** to continue:



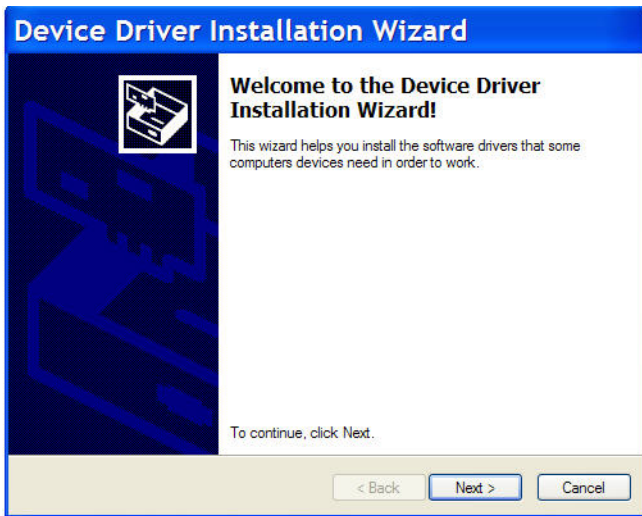
To select a folder where setup will install files click **Browse** or to accept the suggested folder, click **Next**:



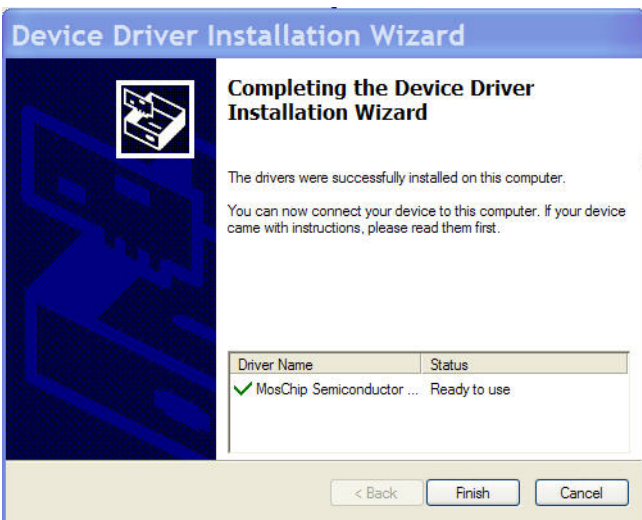
USB 1.1 IrDA Bridge Driver is being installed:



To install the software click **Next**.



Click **Finish** to complete USB 1.1 IrDA Bridge Driver installation.



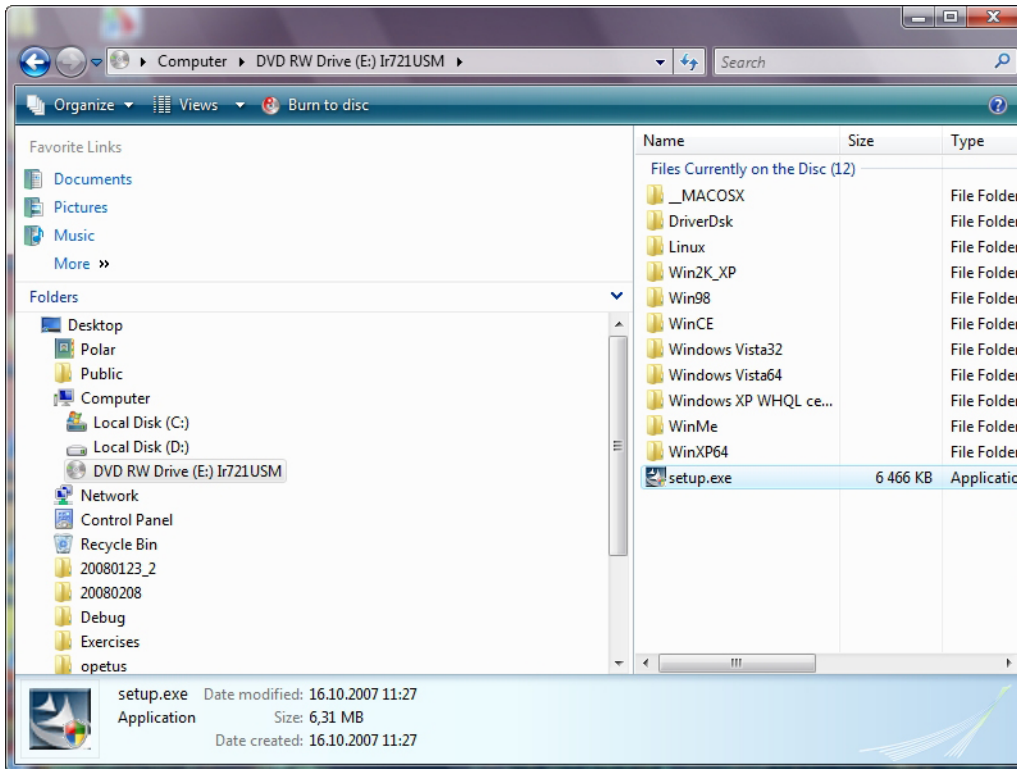
You can now safely plug in the USB 1.1 IrDA Adapter.

Driver Installation With Windows Vista Operating System

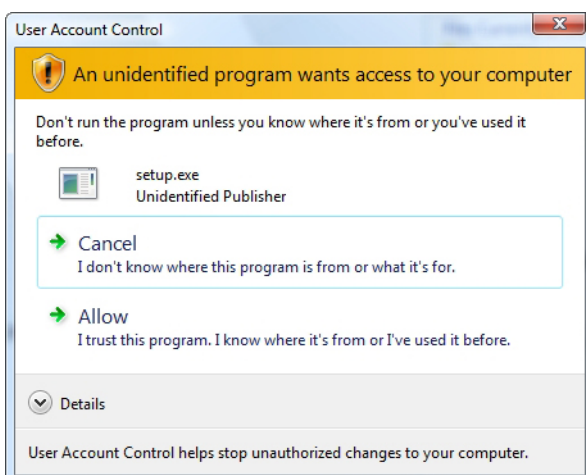
For Windows® Vista operating system follow the instructions below.

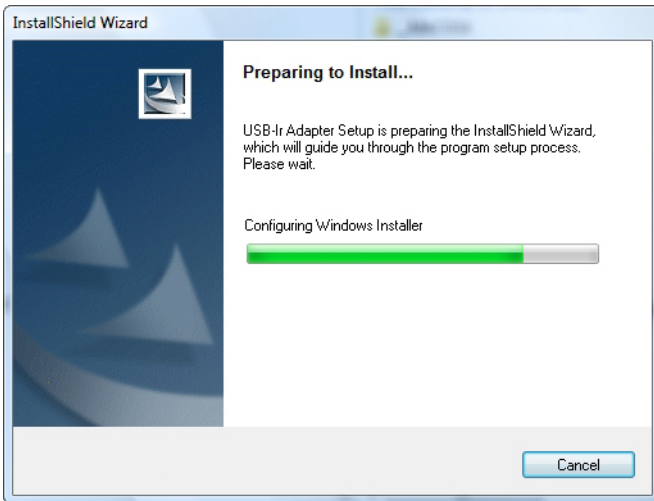
We recommend you insert the CD in your PC and start by installing the USB 1.1 IrDA Bridge Driver.

However, if it does not, open the CD Driver IR778 and select **Autorun**. On Windows Operation System, select folder **WinDriver** and **setup.exe** file.

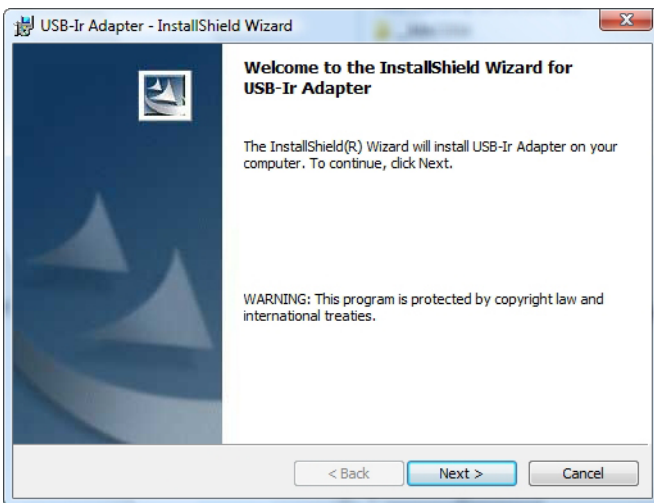


Select **Allow** to continue with the installation process.

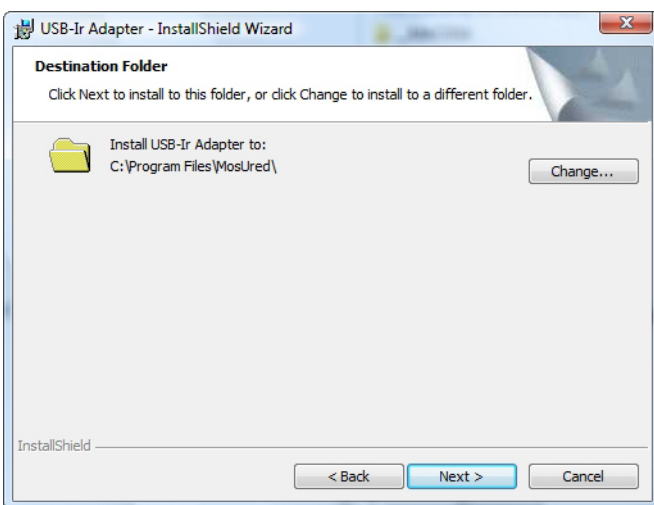




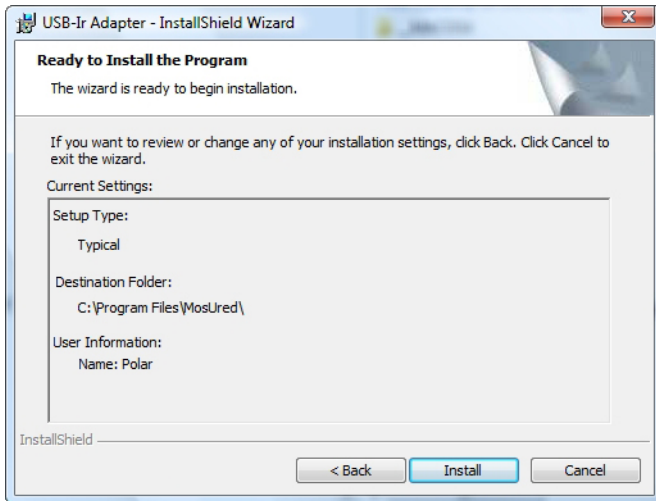
Click **Next** to continue with the installation process.



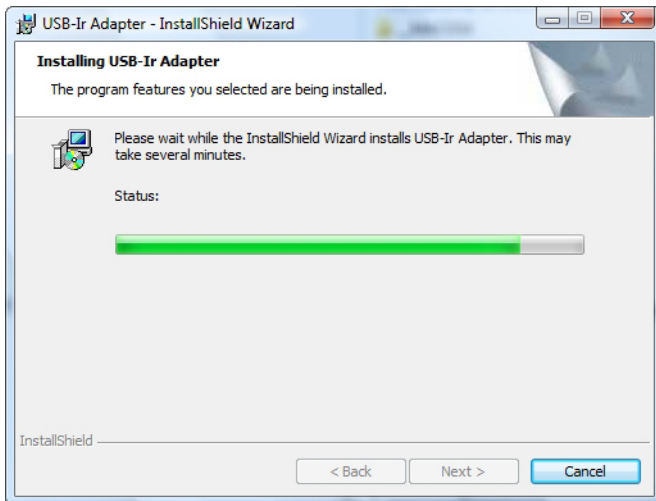
To select a folder where setup will install files click **Change** or to accept the suggested folder, click **Next**.



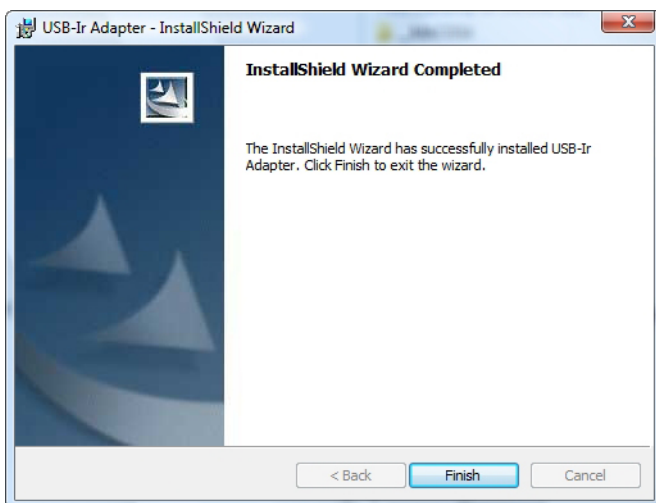
In case you want to review or change any settings, click **Back**. To continue with the installation click **Install**.



USB 1.1 IrDA Bridge Driver is being installed.



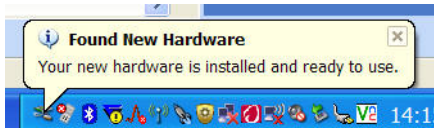
Click **Finish** to complete USB 1.1 IrDA Bridge Driver installation.



You can now safely plug in the USB 1.1 IrDA Adapter.

3. HARDWARE INSTALLATION

Plug in the Polar IRDA USB 1.1 Adapter to the USB port of your computer. You will see a few pop-up screens momentarily as the device is being recognized (no user intervention required).

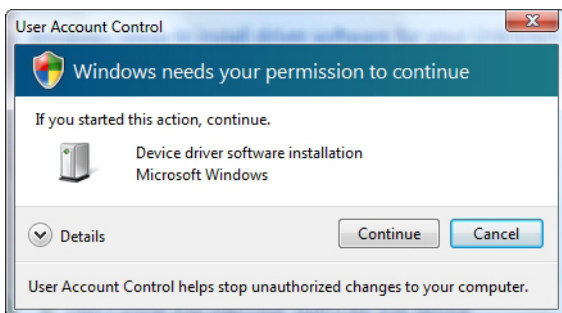
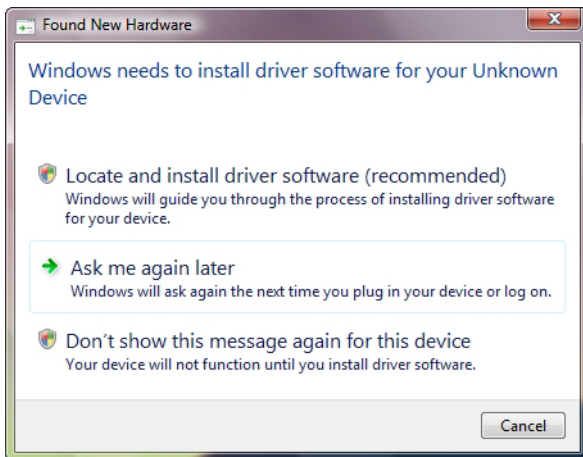


You can now start using your new Polar IrDA USB 1.1 Adapter and USB 1.1 IrDA Bridge Driver.

Hardware Installation With Windows Vista

For Windows® Vista operating system follow the instructions below.

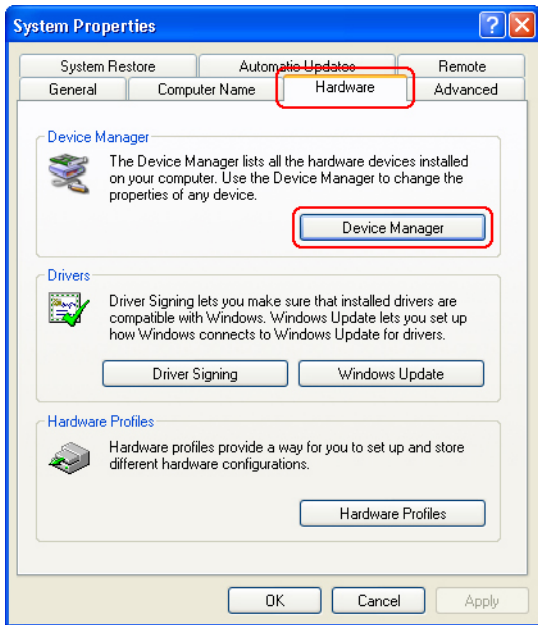
To install the hardware select the **Locate and install driver software (recommended)**. Follow the installation guide.



4. DETECTION

The Polar IrDA USB 1.1 Adapter is installed correctly when the red LED light on the end of it starts to flash.

You can also check the installation by going to Start > Settings > Control Panel > System > Hardware > Device Manager.



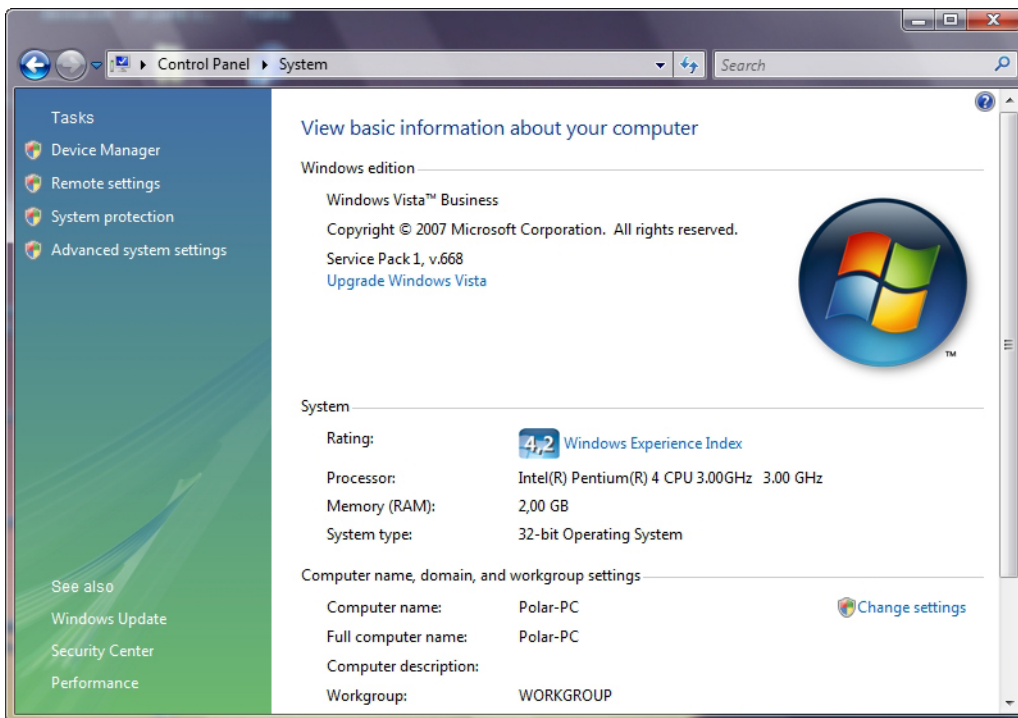
Provided the driver has been correctly installed, 'Device Manager' contents and 'Infrared Devices' now include USB 1.1-IrDA-Bridge.

Detection With Windows Vista

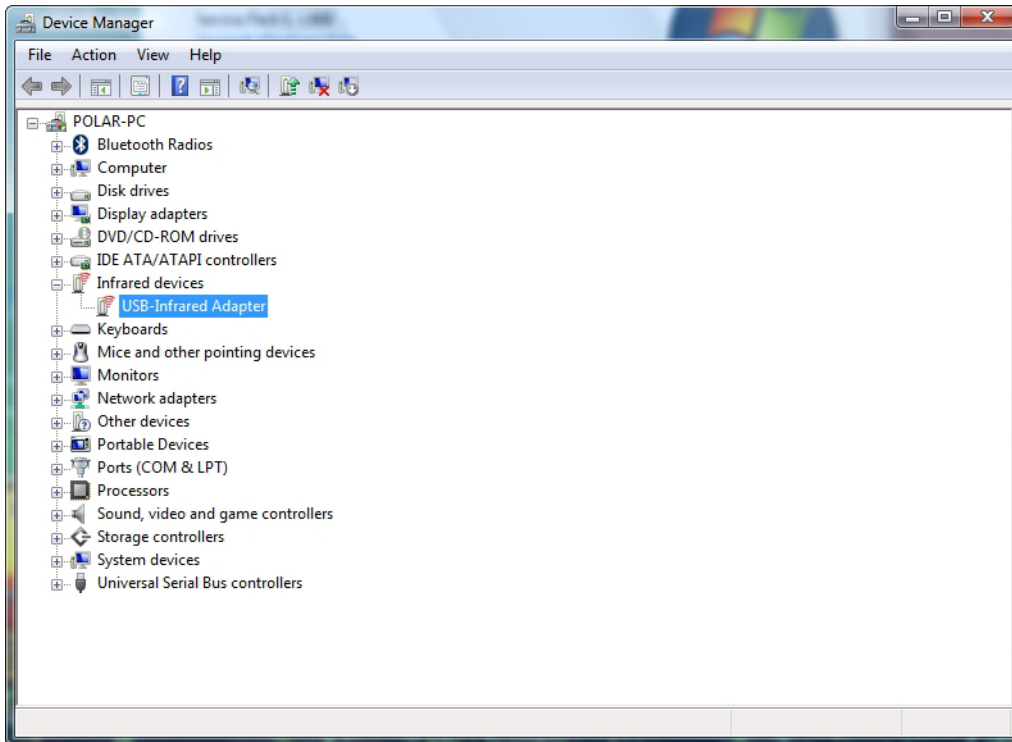
For Windows® Vista operating system follow the instructions below.

The Polar IrDA USB 1.1 Adapter is installed correctly when the red LED light on the end of it starts to flash.

You can also check the installation by going to Start > Settings > Control panel > System > Device manager.



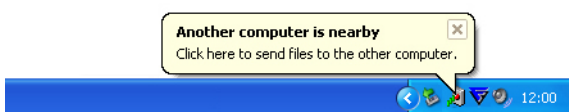
Provided the driver has been correctly installed, 'Device Manager' contents and 'Infrared Devices' now include USB 1.1-IrDA-Bridge.



5. ESTABLISHING IRDA CONNECTION WITH ANOTHER INFRARED DEVICE

After confirming the detection of USB 1.1 IrDA Adapter, place your Polar infrared device and its IR window within one meter (39 inches) range from the infrared window at the end of the Adapter. The Polar device will be detected if it is within a 30 degree angle from the infrared window of the Adapter. Leave a minimum of 1 cm (0.4 inches) space between the devices.

An icon and a popup message will appear in the Toolbar indicating the Adapter is recognizing another infrared device within its range:



While the two devices are connected and data transfer is in progress, you will see the **Data Transfer** icon in your Toolbar. Moving the cursor onto this icon will display the connection speed of IrDA link.



However, if you see an **Infrared Connection** icon as pictured below, the two devices are connected but no data is being transferred:



As **Infrared Connection** icon appears on Toolbar, the **Wireless Link** icon appears on your desktop:



6. REMOVE POLAR IRDA 1.1 USB ADAPTER FROM THE

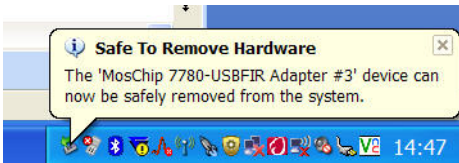
COMPUTER

To safely remove the Polar IrDA 1.1 USB Adapter from your PC, click the **Safely Remove Hardware** icon:



Then select the **Safely remove USB 1.1 IrDA Bridge**

Once **Safe To remove Hardware** is shown you can unplug the Polar IrDA 1.1 USB Adapter from the PC.



7. UNINSTALLATION

To remove the Polar USB 1.1 IrDA Bridge Driver from your PC, just re-install the CD into your PC and it will automatically launch the uninstallation procedure.

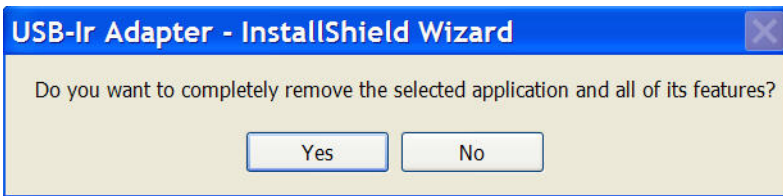
Click **Next** to proceed:



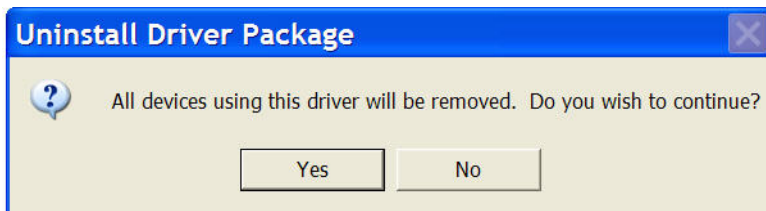
To continue with the uninstallation select **Remove** and click **Next**:



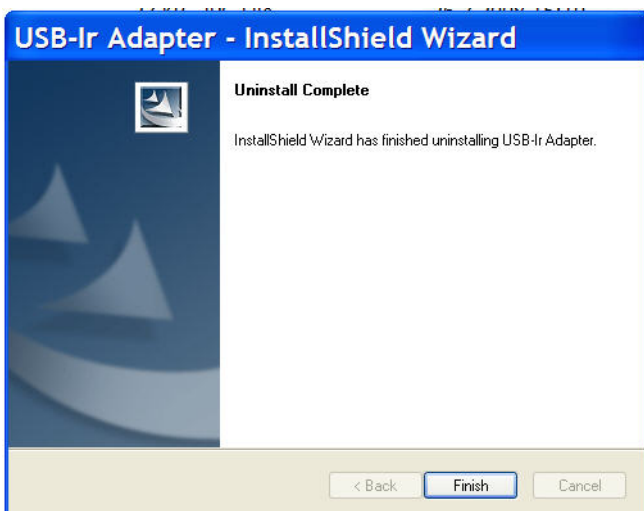
Click **Yes** to remove the application.



Click **Yes** to confirm.



Click **Finish** to complete the uninstallation.



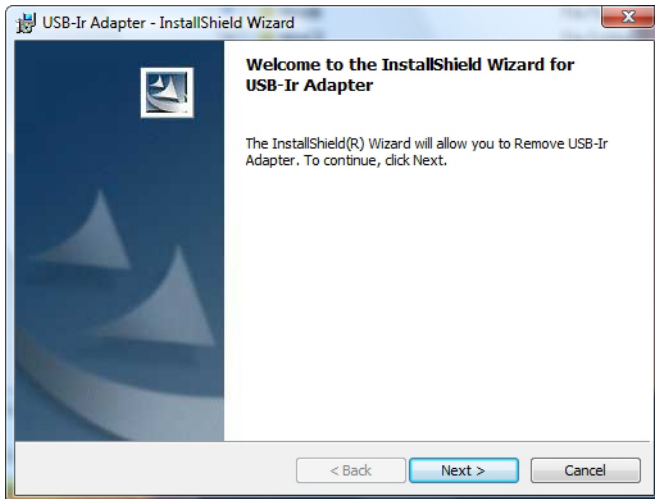
Alternatively, go to **Start > Settings > Control Panel > Add/Remove Program** and remove Polar USB 1.1 IrDA Bridge Driver.

Uninstallation With Windows Vista

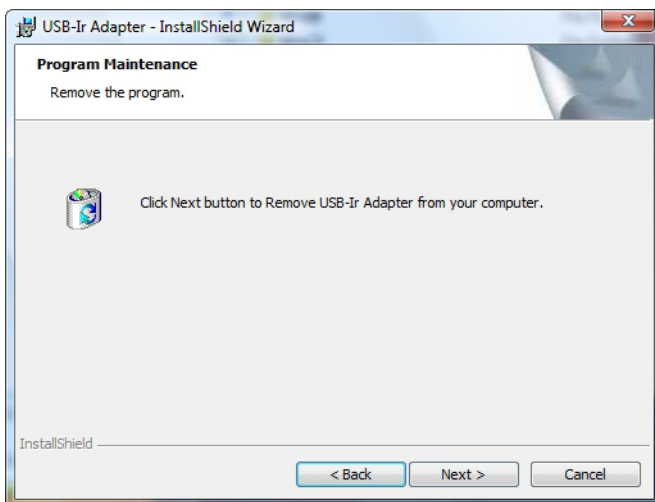
For Windows® Vista operating system follow the instructions below.

To remove the Polar USB 1.1 IrDA Bridge Driver from your PC, just re-install the CD into your PC and it will automatically launch the uninstallation procedure.

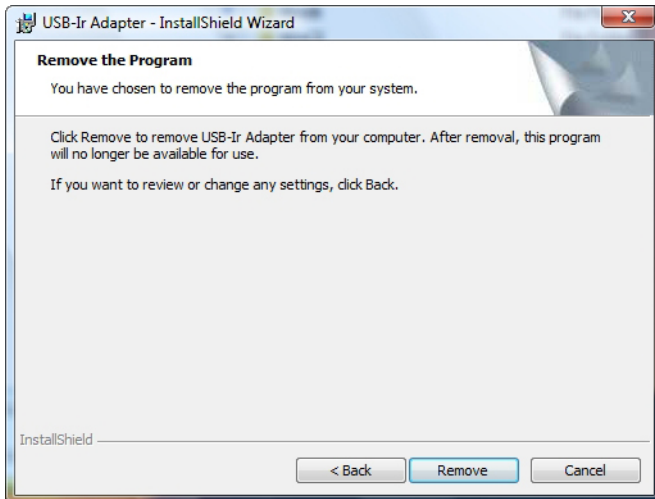
Click **Next** to proceed:



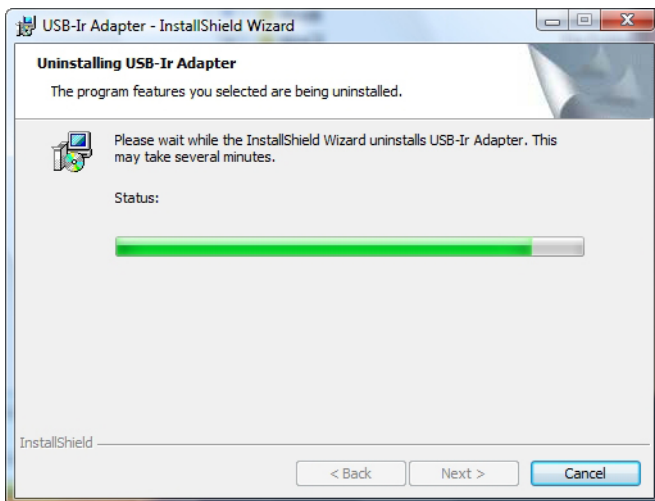
Click **Next** to remove the program:



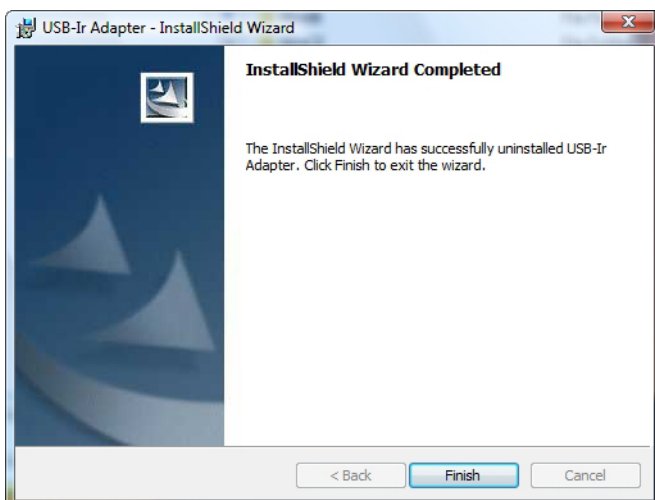
Click **Remove** to remove the program:



The USB-Ir Adapter is now being uninstalled.



The USB-Ir Adapter has now been successfully uninstalled. Click **Finish** to complete the uninstallation.



Alternatively, go to **Start > Settings > Control Panel > Add/Remove Program** and remove Polar USB 1.1 IrDA Bridge Driver.

8. TROUBLESHOOTING

If the communication fails, check that...:

- ... the infrared devices are positioned correctly. The infrared windows should be within 30 degree angle, no further than one meter (39 inches) and no closer than 1 cm (0.4 inches) from each other.
- ...nothing is blocking the path between the infrared windows of the devices.
- ...there is no other infrared device nearby.
- ... your Polar wrist unit is in the connection mode.
- ...the battery of your Polar wrist unit does not need replacing (i.e. low battery symbol on the display).

9. TECHNICAL SPECIFICATIONS

Polar IrDA USB 1.1 Adapter

Connection	Connects directly to standard PC or Notebook USB port
Power Source	Direct from USB port, no external power required.
Speed	Transmits and receives data speed at 9.6K, 19.2K, 38.4K, 57.6K, 115.2K, 4Mbps (FIR), 16Mbps (VFIR)
Transmission Angle	max. 30 degrees
Transmission Distance	1 - 100 cm (0.4" - 39")
Operation System Compatibility	Microsoft Windows® 98SE/ME/2000/XP/Vista. Microsoft Windows® Service Pack update required before installation. MAC version 10.X
Polar IrDA USB 1.1 Adapter is not water resistant	Compiled for Linux Kernel 2.6.11 & RedHat & Debian Do not expose it to humidity or use it outdoors.
Operating Temperatures:	0°C to 50 °C / 32 °F to 122 °F

This device complies with part 15 Subpart B / Class B of the FCC Rules. Operation is subject to the following two conditions: 1. This device may not cause harmful interference, and 2. this device must accept any interference received, including interference that may cause undesired operation.

10. LIMITED POLAR INTERNATIONAL GUARANTEE

- This limited Polar International Guarantee is issued by Polar Electro Inc. for the consumers who have purchased this product in the USA or Canada. This limited Polar international guarantee is issued by Polar Electro Oy for the consumers who have purchased this product in other countries.
- Polar Electro Inc. / Polar Electro Oy guarantees to the original consumer/ purchaser of this product that the product will be free from defects in material or workmanship for two years from the date of purchase.
- **Please keep the receipt and stamped Polar Customer Service Card. The receipt is your proof of purchase!**
- The guarantee does not cover damage due to misuse, abuse, accidents or non-compliance with the precautions; improper maintenance, commercial use, cracked or broken cases.
- The guarantee does not cover any damage/s, losses, costs or expenses, direct, indirect or incidental, consequential or special, arising out of, or related to the product. During the guarantee period the product will be either repaired or replaced at an authorized service center free of charge.
- This guarantee does not affect the consumer's statutory rights under applicable national or state laws in force, or the consumer's rights against the dealer arising from their sales/ purchase contract.



Polar products are electronic devices and are in the scope of Directive 2002/96/EC of the European

Parliament and of the Council on waste electrical and electronic equipment (WEEE). These products should thus be disposed of separately in EU countries. Polar encourages you to minimize possible effects of waste on the environment and human health also outside the European Union by following local waste disposal regulations and, where possible, utilize separate collection of electronic devices.

Copyright © 2008 Polar Electro Oy, FIN-90440 KEMPELE, Finland.

Polar Electro Oy is a ISO 9001:2000 certified company. All rights reserved. No part of this manual may be used or reproduced in any form or by any means without prior written permission of Polar Electro Oy.

11. POLAR DISCLAIMER

- The content of this manual is for informational purposes only. The products it describes are subject to change without prior notice, due to the manufacturer's continuous development program.
- Polar Electro Inc./Polar Electro Oy makes no representations or warranties with respect to this manual or with respect to the products described herein.
- Polar Electro Inc./Polar Electro Oy shall not be liable for any damages, losses, costs or expenses, direct, indirect or incidental, consequential or special, arising out of, or related to the use of this material of the products described herein.

Manufactured by:

Polar Electro Oy, Professorintie 5, 90440 KEMPELE, FINLAND, Tel: +358 8 5202 100, Fax: +358 8 5202 300, www.polar.fi

17936126.00 ENG A